

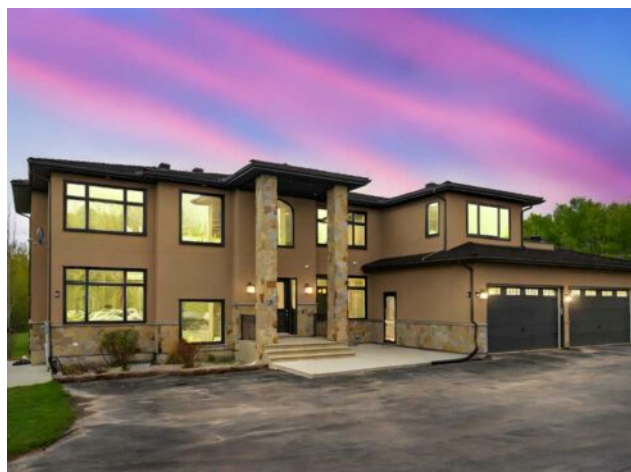


DON'T GAMBLE WITH YOUR HOME.  
**RE/MAX JACK**  
OUELLETTE  
ASSOCIATE

780-831-7725  
jackadmin@gpremax.com

## 95 Bearspaw View Rural Rocky View County, Alberta

MLS # A2223374



# \$2,995,000

Division:	Bearspaw_Calg		
Type:	Residential/House		
Style:	2 Storey, Acreage with Residence		
Size:	4,802 sq.ft.	Age:	2016 (9 yrs old)
Beds:	7	Baths:	6 full / 1 half
Garage:	Quad or More Attached		
Lot Size:	4.50 Acres		
Lot Feat:	Many Trees		

Heating:	Forced Air, Natural Gas	Water:	Co-operative
Floors:	Carpet, Ceramic Tile, Hardwood	Sewer:	Septic Field, Septic Tank
Roof:	Rubber	Condo Fee:	-
Basement:	Finished, Full	LLD:	-
Exterior:	Stone, Wood Frame	Zoning:	R-CRD
Foundation:	Poured Concrete	Utilities:	-

**Features:** Built-in Features, Ceiling Fan(s), Closet Organizers, Double Vanity, Granite Counters, High Ceilings, Jetted Tub, Kitchen Island, Pantry, Walk-In Closet(s), Wet Bar, Wired for Sound

**Inclusions:** N/A

An Exquisite 4.5 acre estate in prestigious Bearspaw! Tucked in behind 12 Mile Coulee on BEARSPAW VIEW, this lot is as close to the city as you get while still enjoying the pinnacle of quiet country living. This extraordinary 2016 custom-built luxury home is set on a beautifully treed lot with a very usable yard for family fun and games. Privately gated with a winding tree-lined driveway, this magnificent residence is beautifully set back in the site. Quality is immediately apparent on the exterior with exposed aggregate pads and stairs, real stone cladding, a RUBBER ROOF, and GEMSTONE lighting! The floor plan of this home blends functionality and luxury through its high end materials, and amazing layout! The floorplan design allows for 6 of the 7 BEDROOMS to be serviced with ensuite washrooms providing luxury to every family member and guest. The homes flexibility is showcased by having the equivalent of 3 PRIMARY BEDROOMS - one on each level of the home! The custom home itself showcases exquisite flooring, beautiful materials and thoughtfully curated lighting throughout. The kitchen is large and bright and has all the top end appliances you'd expect with high ceilings, a massive island and well finished cabinet work complete with a paneled fridge & freezer. The breakfast nook is surrounded with glass and views to the yard. Don't miss the entirely separate SPICE KITCHEN for chefs or food prep - right off of the large WALK THRU PANTRY. Additional main floor highlights include a refined private office, a practical mudroom, gorgeous open but formal dining room - all culminating under the 20 ft coffered ceiling main space with 2 storey window wall and floor to ceiling real stone fireplace. Ascending to the upper level one finds comfort and privacy. A secondary family bonus room offer more spaces for family time and entertaining. The luxurious upper primary

suite is impressive with its expansive walk-in closet, private deck and an opulent 5-piece ensuite with a massive steam shower. Additional bedrooms&mdash;each thoughtfully designed&mdash;include a private 4-piece ensuite and generous walk-in closet, ensuring every resident enjoys a private haven. The fully developed walk-out basement radiates warmth with in-floor heating and abundant natural light, creating an ideal environment for both relaxation and entertainment. Here, you&rsquo;ll find a sleek bar, a versatile recreation room, a spacious family lounge, multiple guest bedrooms&mdash;including one with a contemporary ensuite&mdash;and a private home office for uninterrupted productivity. The impeccably landscaped grounds lead to a heated 220-volt LARGE WORKSHOP&mdash;ideal for the discerning hobbyist or collector&mdash;while a well placed outdoor gazebo offers a peaceful retreat to unwind and connect with nature right in your own back yard. This extraordinary property is a great&nbsp;opportunity!