

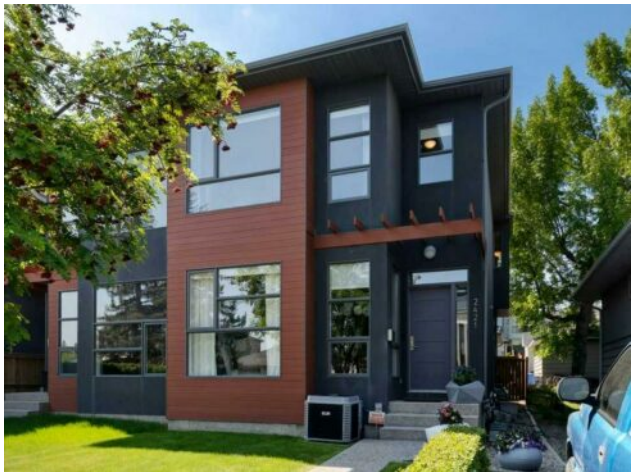


DON'T GAMBLE WITH YOUR HOME.
RE/MAX JACK
OUELLETTE
ASSOCIATE

780-831-7725
jackadmin@gpremax.com

2421 29 Avenue SW
Calgary, Alberta

MLS # A2228912



\$929,900

Heating:	In Floor, Forced Air, Natural Gas	Water:	-
Floors:	Carpet, Ceramic Tile, Hardwood	Sewer:	-
Roof:	Asphalt Shingle	Condo Fee:	-
Basement:	Finished, Full	LLD:	-
Exterior:	Stucco, Wood Frame	Zoning:	R-CG
Foundation:	Poured Concrete	Utilities:	-
Features:	Built-in Features, Double Vanity, High Ceilings, Kitchen Island, Open Floorplan, Quartz Counters, Walk-In Closet(s)		
Inclusions:	NONE		

SORRY OPEN HOUSE CANCELLED DUE TO WAETHER There is something special about living in a vibrant, inner city community within walking distance to all that Marda loop is offering, pubs, restaurants, groceries ,boutiques and fitness studios, close schools, shopping and a quick commute to work downtown. Built on a quiet street with no thru traffic this contemporary inner city homes offers over 2800 square feet of living space, a lovely courtyard like back yard and a double dethatched garage. Wide plank walnut floors invite you into the open main floor plan with a lovely dining room, open kitchen with center island , contemporary cabinets in walnut and white, Corian countertops and high end appliances. The living room in the back of the house offers a floor to ceiling tiled fireplace and many south facing window, a mud room back entrance and 2 piece powder room complete the main floor. All this is with smooth finished 9 foot ceilings . Up the carpeted stairs are 3 bedrooms the master with a luxury spa like bathroom with separate vanities as well as shower and tub, and walk in closet. the remaining 2 bedrooms share a 4 piece bathroom as well as laundry is upstairs. The lower level all professionally developed also has 9 foot ceilings and is designed with a great entertainment , family room space, a 3 piece bath and the ultimate in guest room accommodations with its own bed sitting room combination . The house has forced air heat upstairs, in floor heat in the lower level and central ac, making it your perpect new home.