

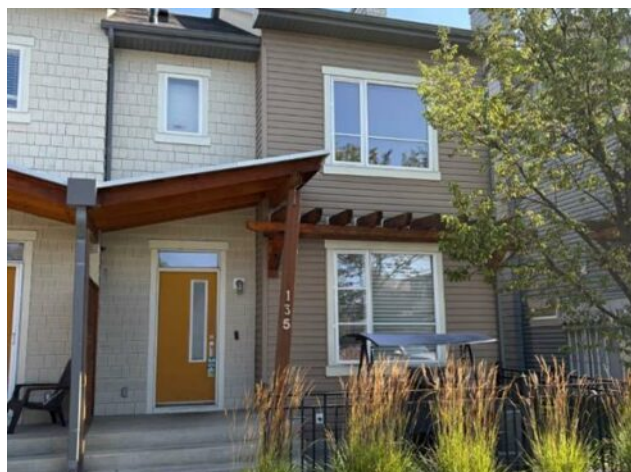


DON'T GAMBLE WITH YOUR HOME.
RE/MAX JACK
OUELLETTE
ASSOCIATE

780-831-7725
jackadmin@gpremax.com

135 Chapalina Square SE
Calgary, Alberta

MLS # A2258067



\$429,000

Division:	Chaparral		
Type:	Residential/Five Plus		
Style:	2 Storey		
Size:	1,459 sq.ft.	Age:	2008 (17 yrs old)
Beds:	3	Baths:	2 full / 1 half
Garage:	Single Garage Attached		
Lot Size:	-		
Lot Feat:	Level		

Heating:	Central	Water:	-
Floors:	Carpet, Hardwood, Tile	Sewer:	-
Roof:	Asphalt	Condo Fee:	\$ 480
Basement:	Full, Unfinished	LLD:	-
Exterior:	Vinyl Siding	Zoning:	M-G d44
Foundation:	Poured Concrete	Utilities:	-
Features:	Bathroom Rough-in, Built-in Features, Natural Woodwork, See Remarks, Vinyl Windows		

Inclusions: n/a

Well situated end unit in the highly sought after community of Stonewater within Chaparral. Open floor plan with sleek design and modern finishings that are ideal for entertaining. 3 bedrooms upstairs with 2.5 bathrooms including a bright, spacious primary bedroom with walk-in closet and ensuite with large shower. Dedicated parking with single attached garage.